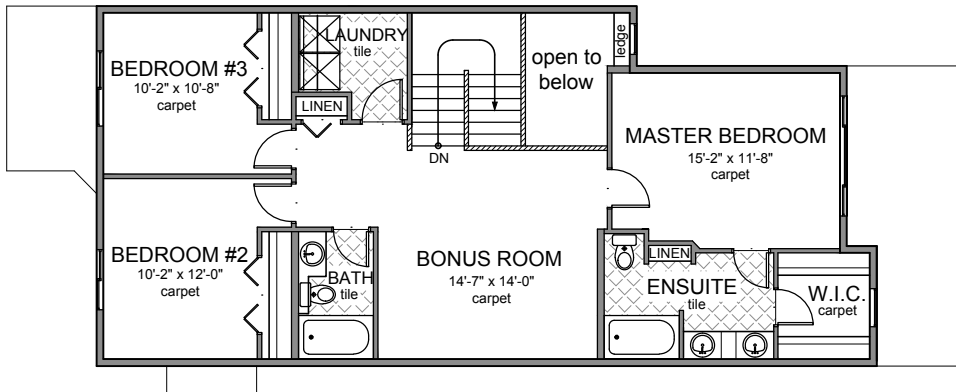


Messina II- A

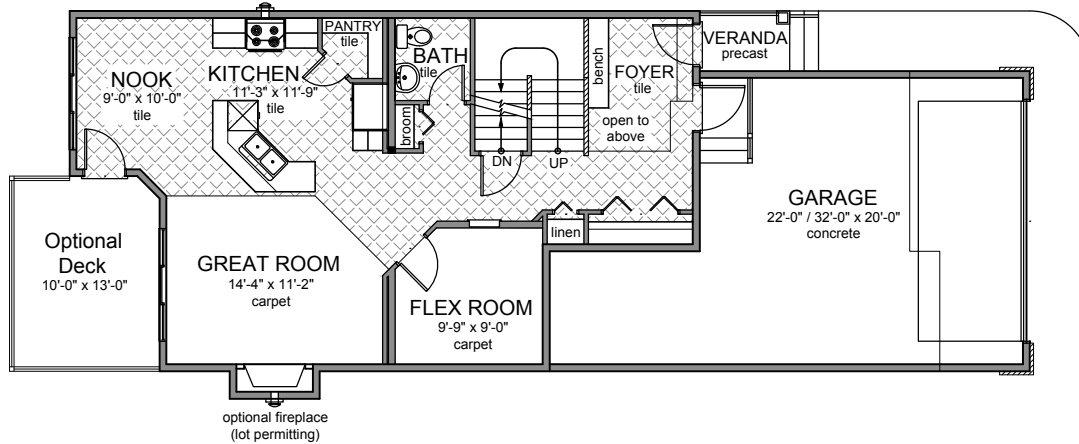
1,890 Sq.Ft.
 Two-Storey
 24'-0" Pocket
 9'-1" Ceiling
 Date: February 8, 2018



Upper Floor Area: 1039 SQ. FT.
 (shown with Avanti Specifications)



Main Floor Plan: 851 SQ. FT.
 9'-1" Main Floor Ceiling



Messina III

Options

Date: February 8, 2018

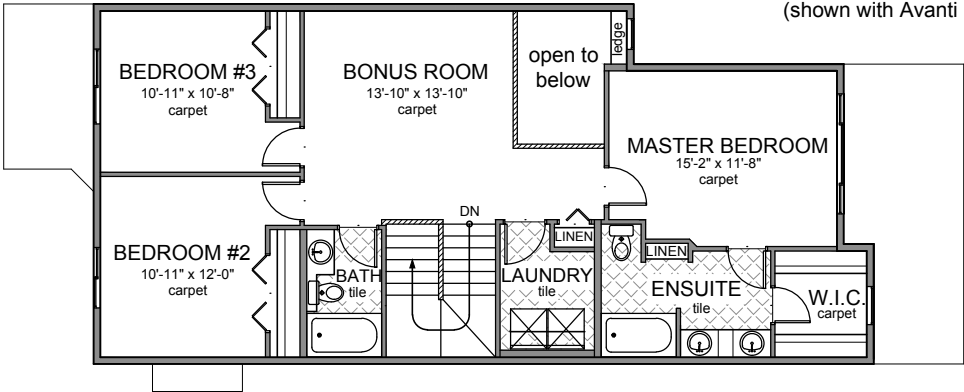
OPTION # 2 : REVERSE STAIR OPTION

STAIRS MOVED TO OPPOSITE SIDE OF HOME, ROOMS ADJUSTED TO ACCOMMODATE

AREA: ADDED 16 sq.ft. TO MAIN FLOOR

\$ _____

Upper Floor Area: 1039 SQ. FT.
(shown with Avanti Specifications)



Main Floor Plan: 867 SQ. FT.
9'-1" Main Floor Ceiling

